

Simple Personal Password Database

SPPD.Exe

Version: 3.4

This page intentionally left blank

Contents

Introduction	4
Installation	5
Using The Application	9
Advanced Functions – File	10
Advanced Functions – Edit.....	12
End-User License Agreement.....	13

Introduction

This application “SPPD.Exe” is a password database program. The purpose of the program is to provide a simple to use application that will store passwords that are used by applications or online websites.

The application is not a browser extension and it doesn’t integrate itself into any application. When you create an entry in the database you enter a title, a URL to the website if it’s a web-based application, a user name, and a password.

If the password entry contains a URL then the application can automatically launch your default browser if you choose. If the browser is already opened, it will launch the desired page in a new tab. This is purely a function of any browser and it doesn’t imply any integration into the browser!

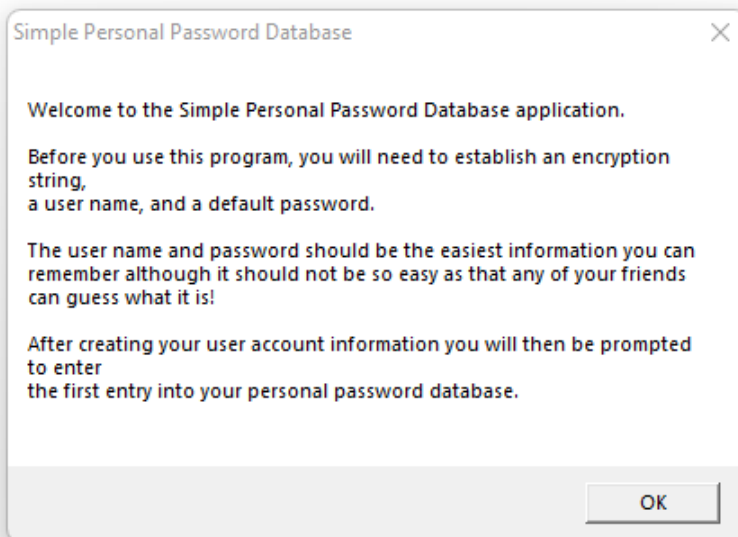
The program is distributed as a single file named SPPD.Exe. To install the program, you should just copy the file to a folder well hidden in your file structure. For instance, you could put it in your documents directory in a sub-folder with a benign name like Report Cards or any other name that would not be of interest to a hacker if he or she gained access to your computer. Then you can right click on the application and send it to your desktop as a shortcut. After the shortcut has been placed on your desktop you can rename it anything you like. The only indication that it might be a password tool is application icon.

Note: The screen images were copied from Microsoft Windows 11 with a white background, and Microsoft Windows 10 with a blue background. You will also notice that Microsoft Windows 11 has returned to rounded edges on application displays.

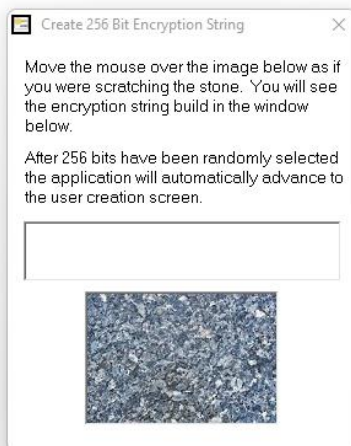
Installation

After you copy the file to your desired directory double click on the application name to launch the program. This is not a digitally signed application so you may see your antivirus or malware detector scanning the app. After a few seconds it will complete and mark the application as a valid program.

You will then see the following introduction screen:

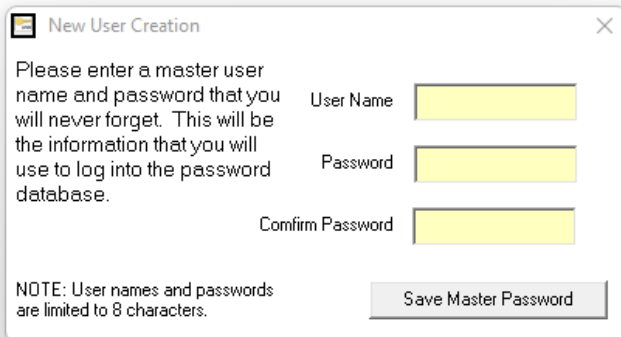


After reading the introductory message click **OK** to continue. You will then see the following screen:



Each installation of the application has its own unique 256-bit encryption string. To create your encryption string move the mouse cursor around the image of the stone and you will see asterisks appear in the window above the image. If you stop moving the cursor the application will just wait until

you move it again! After it has randomly selected the encryption string the window will automatically close and present you the entry screen for your default user name and password.

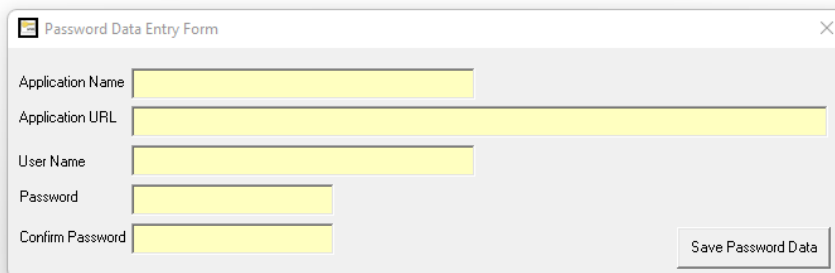


A dialog box titled "New User Creation" with a close button (X) in the top right corner. The text inside reads: "Please enter a master user name and password that you will never forget. This will be the information that you will use to log into the password database." Below this text are three input fields: "User Name", "Password", and "Confirm Password". At the bottom left, there is a note: "NOTE: User names and passwords are limited to 8 characters." At the bottom right, there is a button labeled "Save Master Password".

Your username can be anything you want it to be! Your first name, your last name, or a nickname. If you enter mixed case letters you will always have to enter the same case when you log into the application.

The password that you enter should be something that you will always remember but it should be a password that is not easily guessed by your friends or family!

After entering the required information press **Save Master Password** to continue to the next screen. You are required to create a database entry. If you are not ready to enter a password entry right now just type **delete** in all the fields. Later on, you can delete this entry.



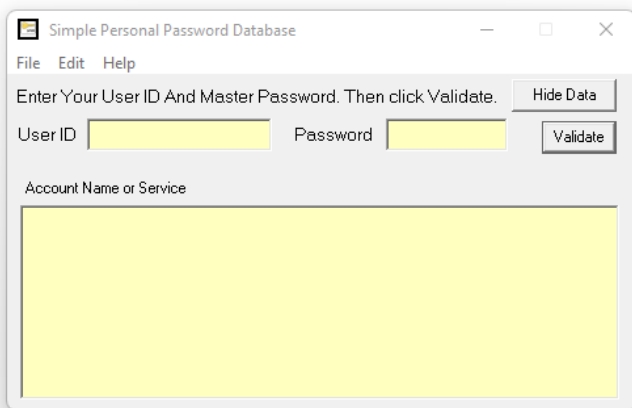
A dialog box titled "Password Data Entry Form" with a close button (X) in the top right corner. It contains five input fields: "Application Name", "Application URL", "User Name", "Password", and "Confirm Password". The "Application URL" field is significantly longer than the others. At the bottom right, there is a button labeled "Save Password Data".

The password data entry form allows you to enter the information related to your password entry. All fields must contain text. If you are not going to use a field enter **N/A or None** in the field.

Application URL's are easily copied from your web browser. If the entry is for a web-based application, the entry should be in a fully qualified format such as: <http://www.MyDesiredWebsite.Com> or <https://www.MyDesiredWebsite.Com>.

After you have entered your first password entry click on **Save Password Data** to move to the next screen.

You will now see the normal opening screen with fields for your username (User ID) and Password.

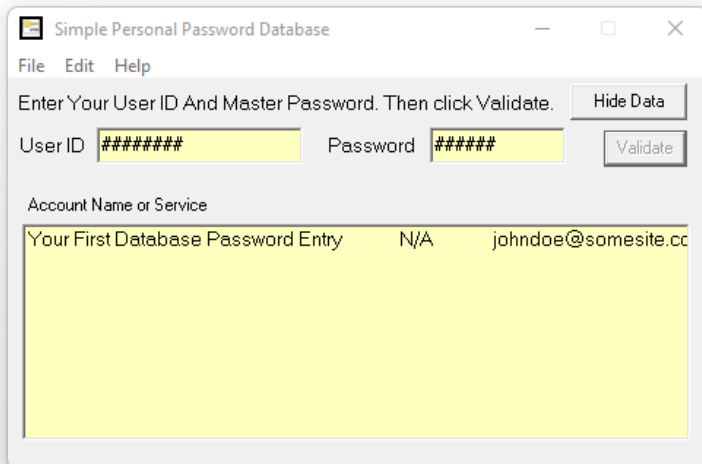


The User ID prompt is a short version of Username. The two buttons on the screen have the following function:

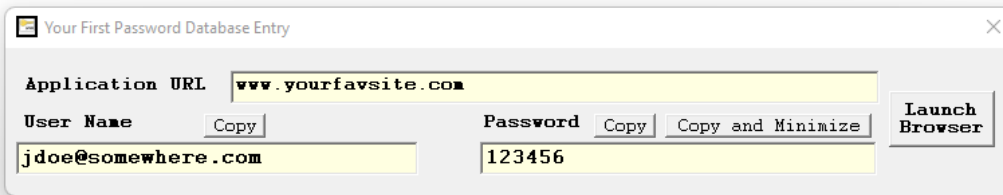
Hide Data will minimize the size of the displayed image to mask any visible passwords.

Validate is used to validate your user name and password. After validation, your passwords are displayed in the window below.

Both input fields use an asterisk password mask. If the application tells you that the password was not matched simply reenter the password a second time. If authentication fails, you may have entered the wrong User ID so simply reenter the data in both fields. After validation, your password information will be displayed in the window below.



If you double click on an entry in the window, you will see the following screen displayed:

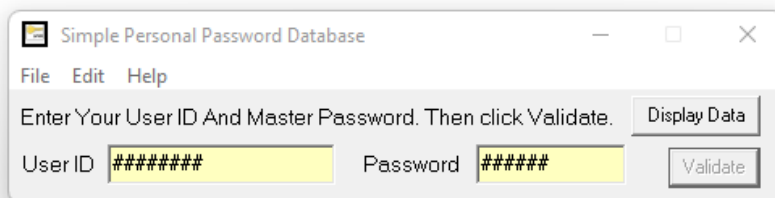


This window automatically appears at the top of your screen, and it visually shows you all your password data. If your password data contains a URL to a website, you can click on **Launch Browser** and a browser window will open.

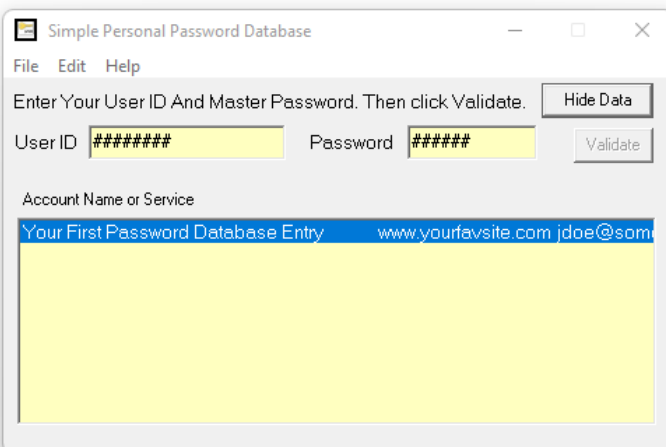
Note: If you are the type that likes their taskbar on the top of the screen then **highlight an entry in the list and then press Enter**. This will adjust the location of the password database copy screen.

When the screen above pops up, the user name is automatically pasted into your copy buffer. Place your cursor in the application user name field and press **Ctrl-V** to paste the user name. Then you can click on the **Copy** button above the user name or password fields and the data will be pasted into your PC's copy buffer. Another **Ctrl-V** keystroke will enter the password.

After clicking on the Copy button for the password the screen will automatically disappear, and the main password application screen will be minimized to your taskbar. To select another password from your database, click on the icon in your taskbar and the application screen will be displayed.

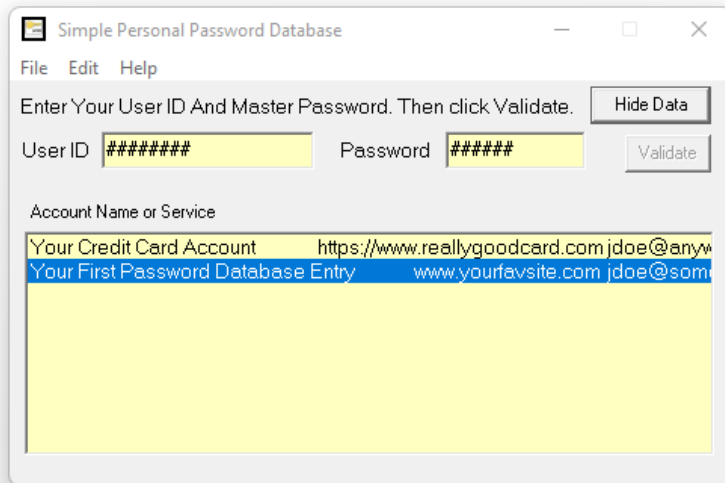


Press **Display Data** to return the screen to its normal size.

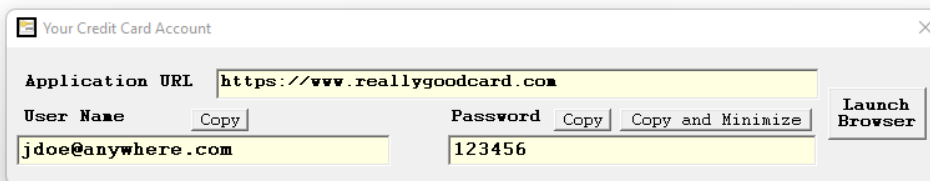


Using The Application

Say for instance that you created a password entry for one of your credit card accounts. To use this, you would first open SPPD by the link you created and then login to display your list of passwords. You would then just double click on the desired entry:



The application will minimize, and an account launch screen will be displayed at the top of your screen.



Click on the button titled **Launch Browser** and your default browser will open. If its already open, a new tab will be created.

Your user name has already been copied into you past buffer on your computer so you can just click on the login field and then press **Ctrl-V** to paste in your user name.

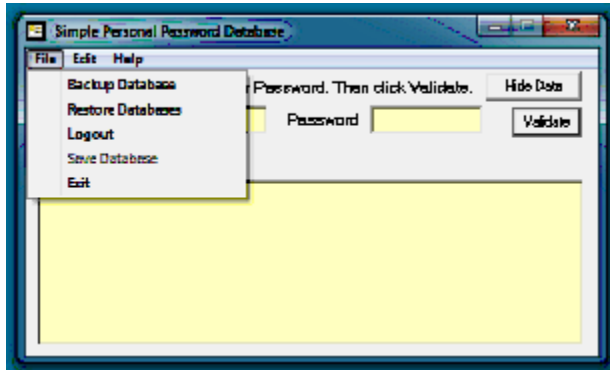
Then from the launch screen click on the button titled **Copy and Minimize** above the password field. You can then paste the password into the password field.

Note: Some web sites don't allow pasting of passwords. If this is the case, you will need to type in your password manually. Fortunately, this is not very frequently encountered!

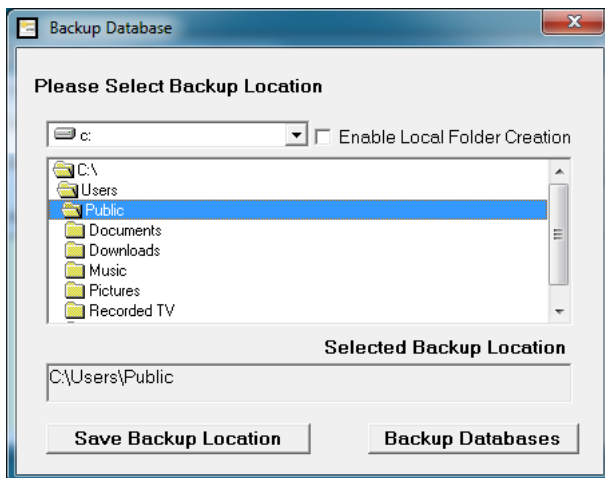
Tip: Drag the top of your browser window down until you can see both the launch screen and the browser window.

Advanced Functions – File

The File menu allows you to Backup, Restore, Logout, and Exit the application. It is highly recommended that you backup the database periodically to a thumb drive. Use caution if you ever select to restore the database! Make sure you are restoring your most recent version of the database!



Backup Databases



Use the backup database screen to backup your password database to another computer, network drive, or thumb drive. The drive selection dropdown lets you select other drive letters assigned on your system. The window below it lists the files or directories on that drive.

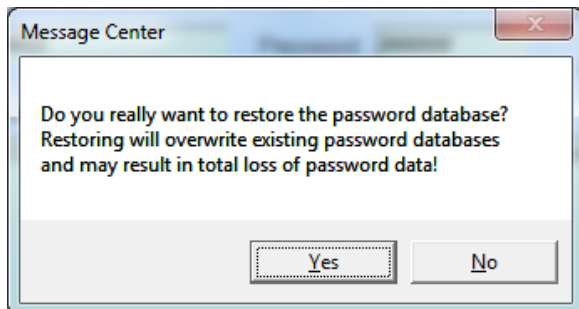
The **Enable Local Folder Creation** checkbox allows you to create a new destination directory if the desired directory name has not been created yet.

The **Save Backup Location** button will allow you to set a selected path as your default backup location.

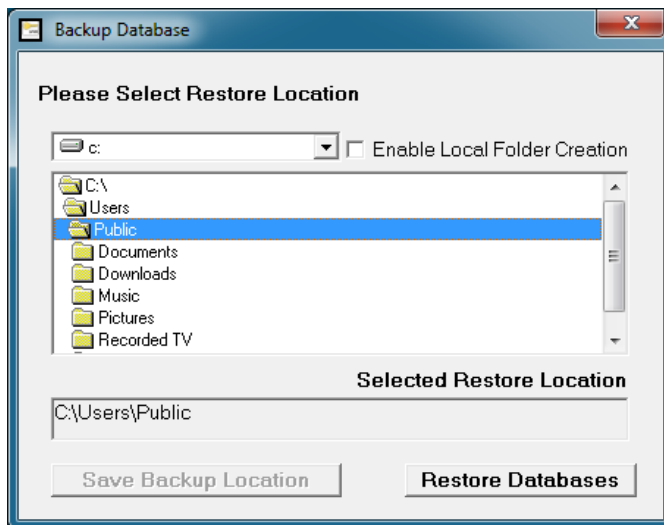
When you click on **Backup Databases** the application will copy the databases and then display a completion message.

Restore Databases

When you select the restore option the following warning will be displayed! If you accidentally selected this option click **No** to exit the restore function.



If you select **Yes**, the following screen will be displayed:

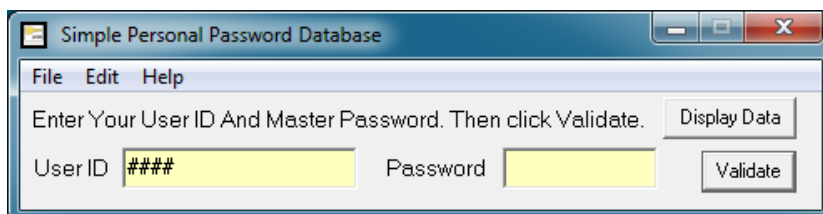


Select the location of your backup databases and then click Restore Databases to complete the restore option.

Note: The Save Backup Location button is grayed out since this option is not applicable for the backup function.

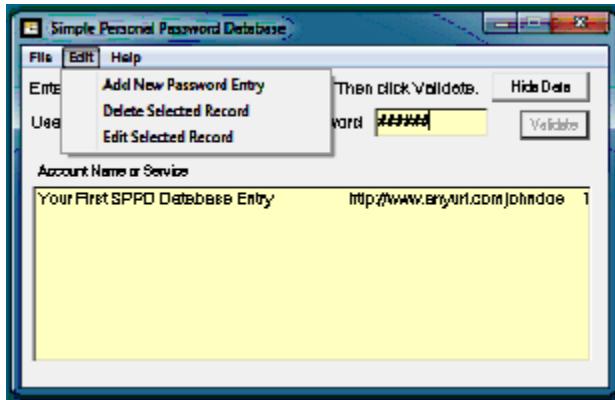
Logout

The **Logout** option allows you to close the databases, but it keeps the application open.



To reopen the database, enter your password and then hit enter or click on the Validate button.

Advanced Functions – Edit



Add New Password Entry

This option allows you to add a new password entry into the database. Please make sure that all fields contain information. If you are not going to use a field simply enter **N/A** or **None** in the field. If you forget to fill out a field the data will not be saved!

Delete Selected Record

This option will allow you to delete a single password entry. The application does not allow multiple records to be selected for deletion.

Edit Selected Record

This option allows you edit an existing record. Simply highlight (click on) the desired entry and select **Edit** and then **Edit Selected Record**. The same password entry screen that you used to create the entry will be displayed. After editing the record press **Save Password Data**. If you click on the **X** in the top right corner the edits will be disregarded, and the screen will close.

End-User License Agreement

Last updated: 04/18/2022

Please read this End-User License Agreement carefully before downloading or using the ("Application") Simple Personal Password Database ("SPPD.Exe").

By downloading or using the Application, you are agreeing to be bound by the terms and conditions of this Agreement.

If you do not agree to the terms of this Agreement, do not download or use the Application.

License

CallawayWebDesign.Net grants you a revocable, non-exclusive, non-transferable, limited license to download, install and use the Application solely for your personal, non-commercial purposes strictly in accordance with the terms of this Agreement.

This application is provided **AS IS**, and the author is not responsible for any data loss relating to the password database application, or suitability for use.

Restrictions

You agree not to, and you will not permit others to:

a) license, sell, rent, lease, assign, distribute, transmit, host, outsource, disclose or otherwise commercially exploit the Application or make the Application available to any third party.

Modifications to Application

CallawayWebDesign.Net reserves the right to modify, suspend or discontinue, temporarily or permanently, the Application, with or without notice and without liability to you.

Term and Termination

This Agreement shall remain in effect until terminated by you or **CallawayWebDesign.Net**.

CallawayWebDesign.Net may, in his sole discretion, at any time and for any or no reason, suspend or terminate this Agreement with or without prior notice.

This Agreement will terminate immediately, without prior notice from **CallawayWebDesign.Net**, if you fail to comply with any provision of this Agreement. You may also terminate this Agreement by deleting the Application and all copies thereof from your desktop, laptop, or notebook.

Upon termination of this Agreement, you shall cease all use of the Application and delete all copies of the Application from your mobile device or from your desktop.

Severability

If any provision of this Agreement is held to be unenforceable or invalid, such provision will be changed and interpreted to accomplish the objectives of such provision to the greatest extent possible under applicable law and the remaining provisions will continue in full force and effect.

Amendments to this Agreement

CallawayWebDesign.Net reserves the right, at its sole discretion, to modify or replace this Agreement at any time.

Contact Information

If you have any questions about this Agreement, please contact us.

questions@callawaywebdesign.net